

# PKP CARGO INTERNATIONAL Group

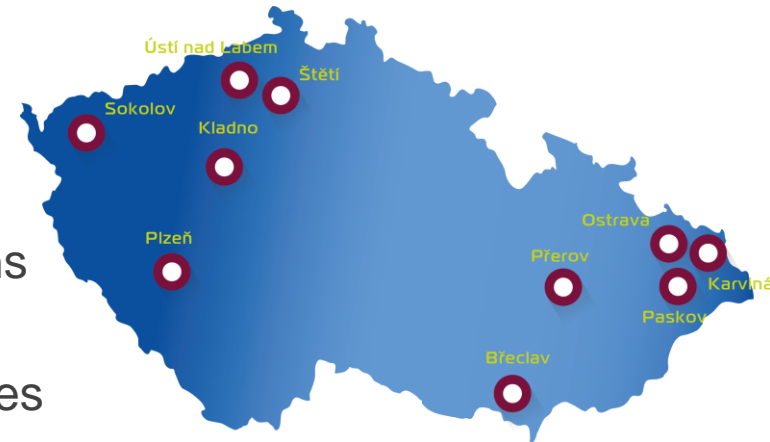
PKP CARGO INTERNATIONAL a.s.  
PKP CARGO INTERNATIONAL HU Zrt.  
PKP CARGO INTERNATIONAL SK a.s.  
PKP CARGO INTERNATIONAL SI d.o.o.  
AWT ROSCO a.s.  
AWT Rekultivace a.s.



**PKPCARGO** International

## PKP CARGO INTERNATIONAL Group

- One of the most important providers of rail freight services in Europe
- Provides comprehensive and modern solutions chiefly to major industrial enterprises
- It operates throughout Europe where it provides comprehensive transport, logistics and forwarding services across all industries
- Has an extensive fleet of more than 130 locomotives and 2 800 wagons
- In the Czech Republic it owns the Paskov intermodal transport terminal
- Operates more than 55 rail sidings
- Owns more than 330 km of its own tracks
- Employs about 1 450 people



## We stand on solid foundations

- 1952** Company OKR - Doprava founded
- 1962** Company OKR Rekultivace founded (currently AWT Rekultivace)
- 1991** Change of company name to OKD, Doprava
- 2010** Experience from rail transport and shipping brought together and one strong entity created under the AWT brand
- 2015** Merger with PKP CARGO, the leading rail carrier in Europe
- 2019** Change of name and rebranding of Group to PKP CARGO INTERNATIONAL



1952



2019

## PKP CARGO INTERNATIONAL Group in numbers

PKP CARGO INTERNATIONAL Group is one of the most important providers of rail freight transport in Europe.

PKP CARGO INTERNATIONAL is one of the **5** largest rail freight carriers in the Czech Republic

**55** RAIL SIDINGS

**72** YEARS OF EXPERIENCE  
in rail transport and freight forwarding

**130** LOCOMOTIVES

**330** KM OF OWN TRACK

**1 450** EMPLOYEES  
roughly the number of people employed  
by Group

**2 800** TRAIN WAGONS

**70 000** M<sup>2</sup> is storage and handling area  
of Paskov Terminal

**110 000** CONTAINERS AND  
TRAILERS

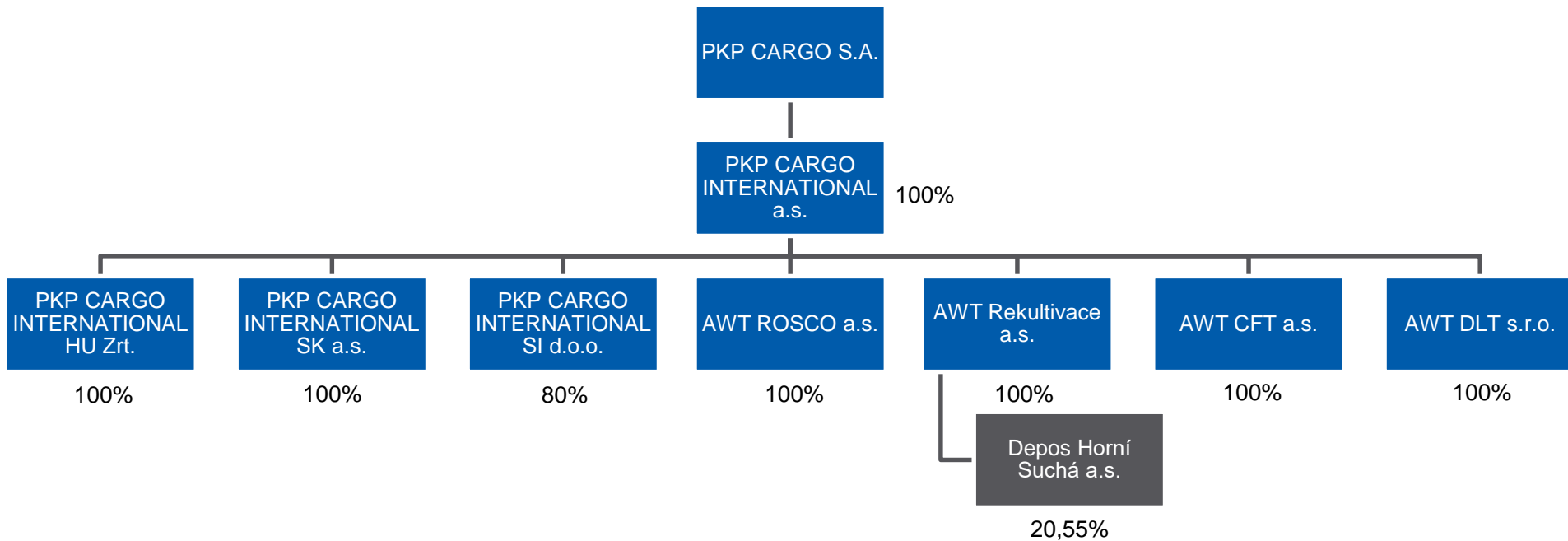
are transloaded at the Paskov Terminal

**6 800 000** TONNES OF GOODS  
amounts to annual haulage

**13 000 000** TONNES OF FREIGHT  
are moved each year at the 55 rail  
sidings

**815 000 000**  
NETTONE-KILOMETRES  
it carries train transport annually

## Structure of PKP CARGO INTERNATIONAL Group



## PKP CARGO INTERNATIONAL Group services

- Rail transport
- Rail forwarding
- Railway and sidings management
- Railway construction and track services
- Intermodal transport
  - Paskov Terminal
- Lease, repair and comprehensive management of train wagons
- Cleaning of railway tankers, freight wagons and tank trucks – [AWT ROSCO](#)
- Repair and maintenance of locomotives
- Reclamation and construction works – [AWT Rekultivace](#)



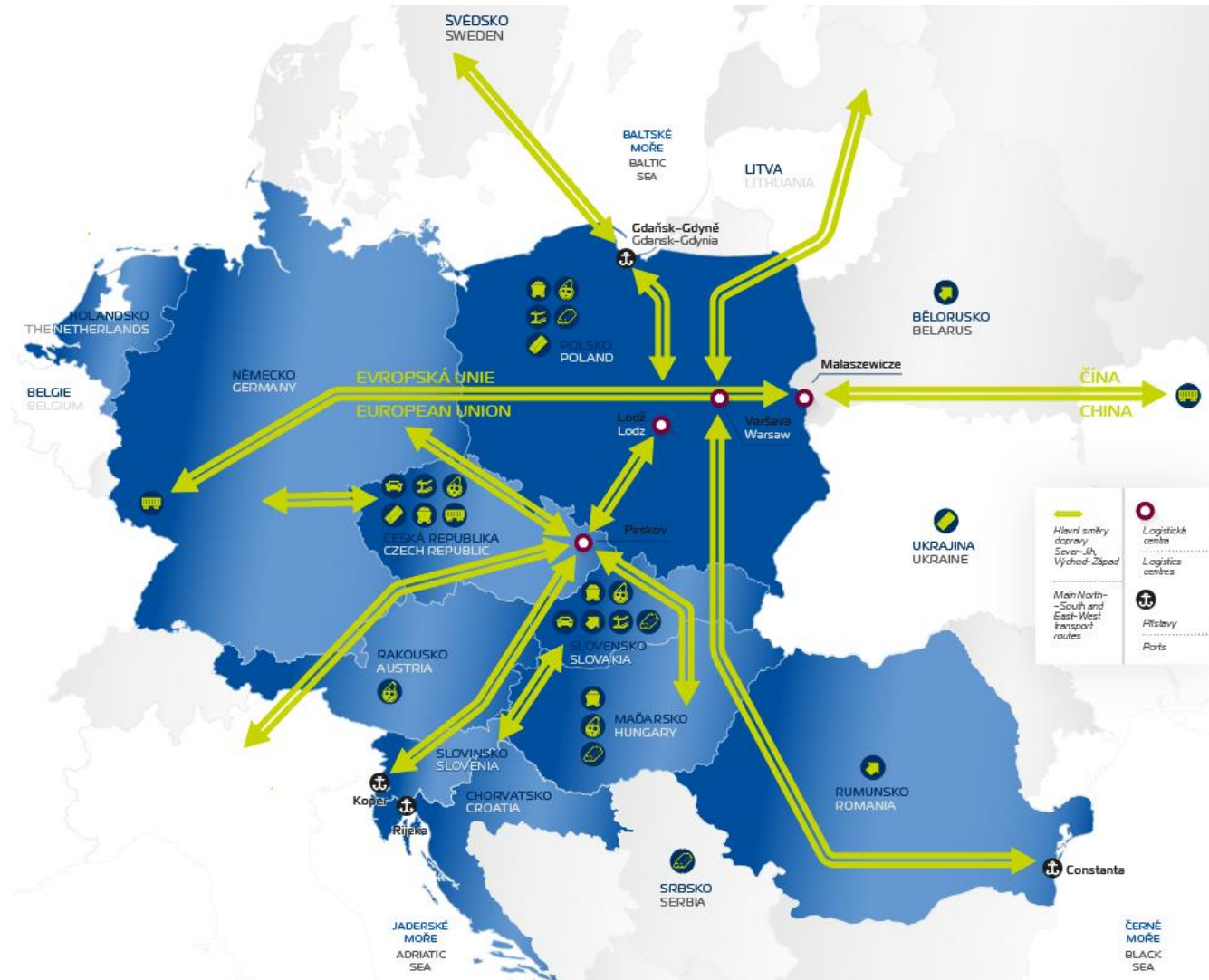


## Rail transport

- One of the most important providers of rail carrier services in Europe
- Fourth largest railway carrier in the Czech Republic (by train kilometres)
- Annual haulage of almost 7 million tonnes of goods
- National and international transport
- Transport using both entire trains and sets of wagons
- Special and singular shipments
- Cooperation with collaborating carriers in Europe
- Representation in Hungary, Slovakia and Slovenia via:
  - PKP CARGO INTERNATIONAL HU,
  - PKP CARGO INTERNATIONAL SK,
  - PKP CARGO INTERNATIONAL SI



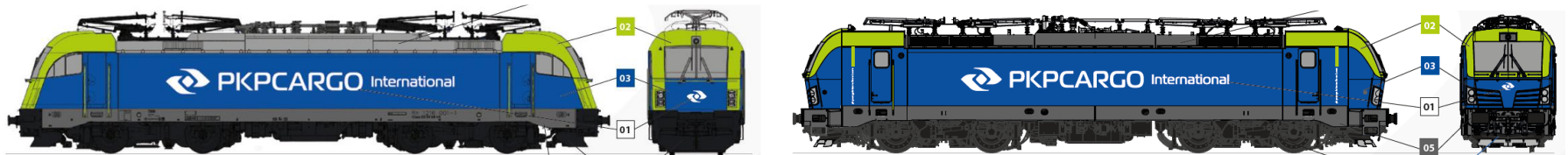
# Railway transport and forwarding of PKP CARGO Group across all business sectors



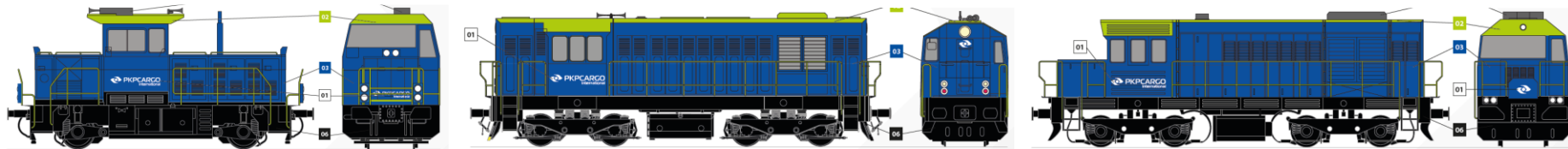


# The most used locomotives in PKP CARGO INTERNATIONAL

Multisystem 183 (Taurus), 383 (Vectron), ET43 (Dragon 2)



Diesel 704, 709, 740, 741, 742, 753, 770



# The most used wagons in PKP CARGO INTERNATIONAL

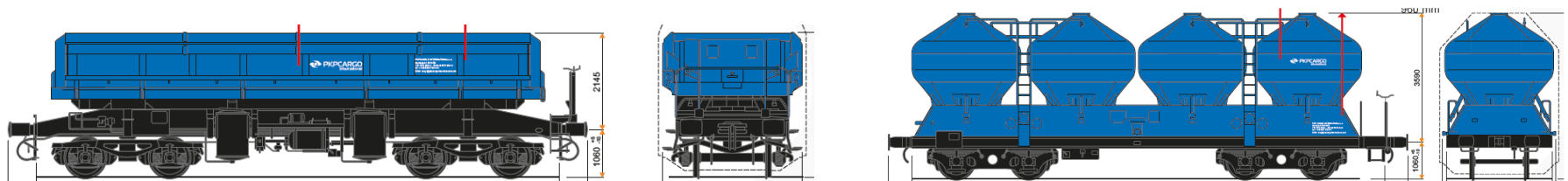
## Fals, Falls



## Eanos, Eaos, Eas



## Ua, Uacs



## Rail forwarding

PKP CARGO INTERNATIONAL has many years of experience in rail forwarding. We do not rely solely on one transport provider, either at home or abroad.

- Customised, comprehensive transport solutions (3PL solutions)
- Utilisation of the extensive Group fleet as well as free capacity on the market
- Not reliant on one transport provider, either in the Czech republic or abroad
- Arrangement of follow-up transport, including creation of road-rail-road logistic chains



## Railway management

- Comprehensive services using railways (sidings) including related services and administration
- Provision of accompanying services – unloading, loading, belt haulage, area maintenance, issuance of consignment notes, consignment weighing and packing, inter-factory road transport
- Track Inspection and maintenance
- “Safety consultant” services in connection the haulage of dangerous goods by rail (RID) and road (ADR)





## Railway construction and track services

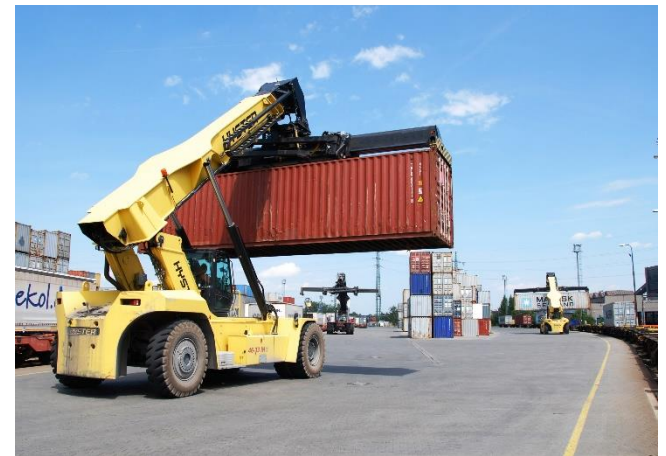
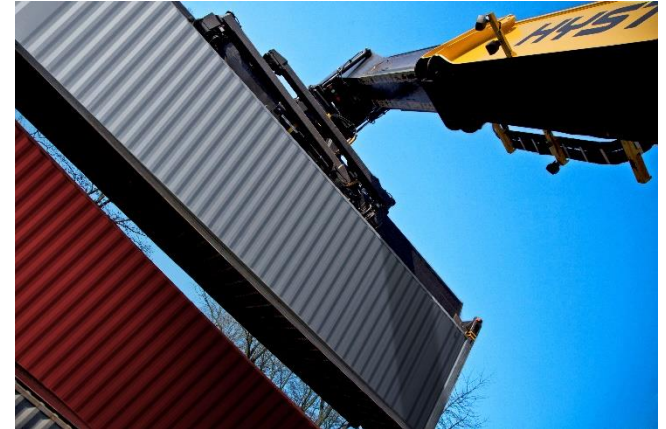
- Construction and reconstruction of railway corridors and sidings
- Construction and reconstruction of special railway engineering projects (crane, tram and narrow-gauge railways)
- Regular track and switch maintenance on own and external infrastructure
- Provision of logistics of haulage of construction aggregate to major corridor construction projects on infrastructure owned by „Správa železnic“ (Railways administration in the Czech Republic)
- Assembly, maintenance and repair of communication security equipment, implementation of radio broadcasting networks
- Own means of mechanisation and assembly based in Karviná





## Intermodal transport

- Operation of entire trains allowing transloading of ISO containers, trailers and exchangeable extensions/trailer bodies
- Transport using entire trains (regular, ad-hoc) in the Czech Republic and across Europe
- Wide network of partners on railways and in ports
- Provision of locomotives, tractions, engine drivers and wagons
- Track&Trace
- Transport in the Just-In-Time regime
- Biggest operator of the ACTS (Abroll-Container-Transport-System) system in central Europe
- Transport services for important intermodal transport operators, forwarding companies and independent companies



# Paskov Terminal

- Close proximity to important industrial zones and the Polish and Slovakian borders
- Terminal with a capacity of 4 800 TEU and storage and handling area of 70 000 m<sup>2</sup>
- 9 container and trailer loaders
- Transloading of containers, trailers and exchangeable extensions
- Short-term and long-term container storage
- Container repair and cleaning
- Adjoining railway station (owned and operated by PKP CARGO INTERNATIONAL) has 9 tracks, the longest being 750 m



## Lease, repair, cleaning and comprehensive management of train wagons

- Rental of freight wagons
- Maintenance and repair of train wagons
  - Repair shops in Ostrava and Kladno
- Cleaning of tank cars and other types of wagons, tank trucks and road containers
- Handling of hazardous waste and waste disposal



### Fleet of 2 800 freight train wagons:

- Open, high-wall and hopper wagons intended for the transport of coal and similar loose goods
- Tank cars for transporting fuel and mineral products
- Container wagons
- ACTS (Abroll-Container-Transport-System) wagons



## Repair and maintenance of locomotives

- Locomotive repair shops (locomotive depots)
  - Lovosice
  - Kladno
  - Štětí
  - Karviná
  - Paskov
  - Dětmarovice
- Strategic localization of repair shops on main transport corridors
- Covered parkings with channels, outdoor channels
- Refueling equipment
- Crane systems
- Storage space
- Nonstop dispatching





## Reclamation and construction work



In addition to transport, PKP CARGO INTERNATIONAL Group, through **AWT Rekultivace**, has extensive experience with reclamation, groundwork and construction as well as with waste handling and disposal.

- Reclamation work
- Groundwork
- Construction, demolition and engineering activities
- Liquidation of environmental burdens, dumps, waste
- Freight road transport





# Sustainability (ESG)



## Corporate Social Responsibility (CSR)

Our main domain is the provision of rail transport services, the most environmentally friendly form of transport:

- Continuous modernisation of the rail fleet
- With the aim of achieving the highest environmental standards
- Reduction of power consumption and waste
- ISO certification

With about 1 450 employees, we are one of the biggest employers in the Czech Republic:

- Occupation health and safety
- Health programmes
- Employee benefits
- Cooperation with students and universities



## Certificates

PKP CARGO INTERNATIONAL Group satisfies internationally recognised standards:

- Diamond Certificate (Integrated Management System)
- EN ISO 9001:2015 (Quality Management System)
- EN ISO 14001:2015 (Environmental Management System)
- ISO 37301:2021 (Compliance Management System)
- ISO 45001:2018 (Occupational health and safety Management System)
- ISO 50001:2018 (Energy Management System)
- ČSN ISO 26000 (Corporate Social Responsibility)
- SQAS (Rail Carrier)
- GMP+ B4 (Transport)
- Certificate AEO (Authorised Economic Operator)



## PKP CARGO Group

- The biggest operator of freight rail transport in Poland and the leading logistic operator in the European union
- Provides a wide range of logistic services in rail, road and sea transport
- Owns the largest fleet of cargo trains in Poland (1 600 locomotives, 53 000 wagons)
- PKP CARGO Group includes the specialised company PKP CARGO CONNECT (intermodal transport and rail forwarding) and PKP CARGOTABOR (maintenance and modernisation of rolling stock)
- The shares of the company have been listed on the Warsaw Stock Exchange since 2013. The primary shareholder is PKP S.A.



## Contact

### **PKP CARGO INTERNATIONAL Group**

Betonářská 580/14

712 00 Ostrava-Muglinov

tel.: +420 596 166 111

[obchod@pkpcargointernational.com](mailto:obchod@pkpcargointernational.com)

[sales@pkpcargointernational.com](mailto:sales@pkpcargointernational.com)

[www.pkpcargointernational.com](http://www.pkpcargointernational.com)